



Major Sponsor:



PALMPEX 2010 STAMP SHOW

New Zealand National Stamp Exhibition
Arena Manawatu, Palmerston North
12-14 November 2010

Secretary: Tony Charleston
Palmpex 2010 Stamp Show
PO Box 206
PALMERSTON NORTH 4400
New Zealand

palmpex2010@inspire.net.nz
www.stampsnz.co.nz/palmpex

Newsletter No 3 July 2010

Greetings from Palmerston North! Winter time is here and the weather is somewhat cooler and wetter than in April when our last newsletter was distributed. This newsletter includes new information about our competitive classes; social event details; souvenir information and Palmpex 2010 Stamp Show highlights.

Firstly, an apology from the organisers regarding the stock car customised advertising stamps: it is very unfortunate that the events unfolded the way they did and because we were unable to supply some of the listed items to clients we do understand your frustrations.

We decided against reprinting any of the stock car stamps in order to avoid further upset. Later in this newsletter is a full list and quantities available of souvenirs remaining as at 1 July. Obviously we do not want any souvenirs remaining once Palmpex 2010 Stamp Show is over.

Palmpex 2010 Stamp Show

An additional competitive class is now available: Division 4 class 8.3: Postcards - New Exhibitors 8 pages and Regulation 27 will apply – the same as for class 6.7b.

A reminder to all who are interested in entering competitively: entries close at the end of July and the full list of competitive classes is as follows:

DIVISION 1: Invited and Jury Classes

- 1.1 Invited displays (non-competitive)
- 1.2 Jury class (competitive)
- 1.3 New Zealand Championship Class – 5 or 8 frames (see Regulation 28)

DIVISION 2: FIP Qualifying Classes

Traditional Philately

- 2.1 New Zealand or Australia
- 2.2 Other Countries

Postal History

- 3.1 New Zealand or Australia
- 3.2 Other Countries
- 3.3 Marcophily (postal markings)
- 3.4 Historical, Social or Special Studies

Other Classes

- 4.1 Postal Stationery
- 4.2 Aerophilately
- 4.3 Astrophilately
- 4.4 Thematics
- 4.5 Revenues
- 4.6 Maximaphily
- 4.7 One Frame

Youth

- 5.1 10 - 15 years old at 1 January 2010 – 1 to 3 frames
- 5.2 16 - 18 years old at 1 January 2010 – 2 to 4 frames
- 5.3 19 - 21 years old at 1 January 2010 – 3 to 5 frames

DIVISION 3: Non-FIP Qualifying classes

- 6.1 Polar
- 6.2 FDC
- 6.3 Cinderella
- 6.4 Open
- 6.5 Frugal
- 6.6 Frugal Challenge – 1 or 2 frames – using NZ stamps issued 2000-2009 (see Regulation 29)
- 6.7 Adult Development class (NZ residents only) – see Regulation 27
 - 6.7.a 1 or 2 frames
 - 6.7.b 8 pages – for new exhibitors at a national exhibition

Youth Development

- 7.1 Youth below 13 years of age (8 or 16 pages)
- 7.2 Youth 13-15 years (8 or 16 pages)
- 7.3 Youth 16-21 years (16 pages)

DIVISION 4: Postcards

- 8.1 One or two frames
- 8.2 Three to eight frames
- 8.3 8 pages – for new exhibitors at a national exhibition

For further details please see the key dates information section below and also check out our prospectus available on line at www.stampsnz.co.nz/palmpex where entry forms can also be downloaded.

Key Dates for Palmpex 2010 Stamp Show

- 31 July 2010** Deadline for entry forms **plus title pages** from prospective Palmpex 2010 Stamp Show exhibitors
- 20 Aug 2010** Advice from Palmpex 2010 Stamp Show regarding exhibit acceptances
- 2 Nov 2010** Deadline for entries to be in the hands of Palmpex 2010 Stamp Show sent by courier
- 10 Nov 2010** 10.00 am deadline for hand delivered entries to bin room manager
- 12 Nov 2010** Palmpex 2010 opens 10.00 am
- 13 Nov 2010** Palmpex 2010 awards dinner 7.30 pm
- 14 Nov 2010** Palmpex 2010 closes 4.00 pm

All enquiries about Palmpex 2010 Stamp Show should be made to palmpex2010@inspire.net.nz

Accommodation Options

Collectors and friends planning to visit Palmerston North between 10 and 14 November to attend Palmpex 2010 Stamp Show will be interested in accommodation details. Early accommodation bookings are suggested as November in Palmerston North is in the early part of a busy speedway season. Our exhibition weekend also coincides with the very popular Craft Show at nearby Feilding, where visitors come from all over the North Island, and all require accommodation.

Palmpex 2010 Stamp Show will be held at the **Arena Manawatu** complex. A selection of accommodations is listed below – and in no particular order of preference.

The **Arena Lodge** is situated at 74 Pascal Street almost 50 metres away from the Palmpex 2010 Stamp Show venue and is the closest motel. When booking, if visitors mention that they will be attending our stamp exhibition they may be able to obtain a discount.

Arena Lodge - 74 Pascal St,0800 881 255
info@arenalodge.co.nz

Kingsgate Hotel - 110 Fitzherbert Ave,.....0800 404 010
kingsgate.palmerston@millenniumhotels.co.nz

Kiwi Suites Motel - 107 Broadway Ave,.....0800 666 400
stay@mid-city.co.nz

Supreme Motor Lodge - 665 Pioneer Hwy,.....0800 112 211
stay@supremeaccom.co.nz

Aubyn Court Motorlodge - 360 Ferguson St,0800 908 988
info@aubyncourt.co.nz

Chancellor Motorlodge - 131 Fitzherbert Ave,0800 370 781
info@chancellorlodge.co.nz

Fitzherbert Castle Motel - 124 Fitzherbert Av0800 115 262
reservations@fitzherbertcastle.co.nz

Gateway Motel - 600 Pioneer Highway,0800 636 465
gatewaymotel@xtra.co.nz

Cafe de Paris Inn - 267 Main St,(06) 355 2130
info@cafedeParisinn.co.nz

Quest Palmerston North - 76 The Square, 0800 767 676
host@questpalmerstonnorth.co.nz

Pioneer Motel - 632 Pioneer Hwy,0800 274 663
pioneermotel@clear.net.nz

Hotel Coachman - 140 Fitzherbert Ave,0800 262 246
res@coachman.co.nz

B-K's Motor Lodge, 102 Cuba Street,0800 222 830
info@bkspalmerstonnorth.co.nz

Social Events

At present, plans are being made for the following activities:

Wednesday 10 November: a Manawatu Philatelic Society social evening with a talk and display about the New Hebrides being presented by former MPS president and Australian exhibitor, Bob Radley. All are welcome.

Thursday 11 November: New Zealand Post is sponsoring a bus trip to Wanganui Philatelic Bureau.

Saturday 13 November: Palmpex awards dinner.

Highlights at Palmpex 2010 Stamp Show

Wednesday 10 November: the Chairman's Reception in conjunction with a special Manawatu Philatelic Society meeting. At this social meeting, following a welcome by the Chairman of Palmpex 2010 Stamp Show, a talk and display will be presented by Bob Radley, a former Manawatu Philatelic Society president. Bob's presentation will be on the New Hebrides so plan to attend and enjoy a very different philatelic topic as well as our hospitality. There will be a modest \$10.00 charge to help recover the refreshment costs. Early ordering of tickets will assist our caterers who need to know the numbers attending by 1 November, thank you. Please use souvenir order form to order Chairman's Reception tickets, which may be uplifted from the bin room.

Thursday 11 November: A bus trip to visit New Zealand Post's philatelic bureau in Wanganui. Arrangements are being made for this afternoon trip returning to the Arena Manawatu complex at around 6pm. To book your places on the bus send your details to palmpex2010@inspire.net.nz (bus trip as subject). Already some seats have been booked! This **FREE** trip is available to anyone interested on a first come first served basis with a 1 November deadline.

10 am Friday 12 November: the Governor General of New Zealand will officially open Palmpex 2010 Stamp Show Sir Anand Satyanand, accompanied by his wife Lady Susan Satyanand, will then be escorted to view some of New Zealand Championship Class exhibits.

There will be **FREE** admission to Palmpex 2010 Stamp Show!

Friday to Sunday 12 to 14 November: Palmplex 2010 Stamp Show will feature the inaugural New Zealand Championship Class. The very best New Zealand owned exhibits will be on display in Palmerston North, at Palmplex 2010 Stamp Show, competing for a special trophy which will be presented at the awards dinner. We have a number of confirmed participants in this class and a visit to Palmplex 2010 Stamp Show just to see these entries will be worth your while.

New Zealand Post and 18 NZSDA members will have stands at Palmplex 2010 stamp Show: John & Jan Fitzpatrick; Al Visini; Ashford Stamps; Eccles Stamps; Warwick Jost; Alan Craig; Dunedin Stamp Centre; Shore Philatelics; Nustamps; Palmerston North Stamp Centre Ltd.; Classic Stamps Ltd.; William Carson; The Stamp Shop; Ian Clare; Bill Leggett Collectables; Kadine Stamps; Philatelic Distributors Ltd; and Auckland City Stamps. This is an opportunity for collectors to add or even subtract something from their collections.

Saturday and Sunday 13 and 14 November: various society meetings will be held. Opening the proceedings on Saturday morning is a New Zealand Post question and answer session; following this will be various other society organised meetings. To request a time slot to hold a club meeting contact palmplex2010@inspire.net.nz (society meeting time as subject) now; so that a programme can be arranged.

Saturday 13 November: awards to youth exhibitors who will not be present at the awards dinner will be made at 3.00 pm at Arena Manawatu. All other awards including those for the inaugural New Zealand Championship Class will be made to those attending the Palmplex 2010 Stamp Show awards dinner. Tickets for this event cost \$55.00 each and during the evening an auction of various philatelic items will be held.

Early ordering of tickets will assist our caterers who need to know the numbers attending by 1 November, thank you.

Please use souvenir order form to order Palmplex 2010 Stamp show awards dinner tickets. These may be uplifted from our souvenir sales table.

During the evening a number of special prizes in addition to awards will be made. To date awards have been donated by New Zealand Post, the Fletcher Cole Memorial Trust, JR Mowbray Philatelist Ltd, Campbell Paterson Ltd, Jenny Banfield, Manawatu Philatelic Society, Marlborough Philatelic Society, PYC, Perfin Club of New Zealand and Australia for which Palmplex 2010 Stamp Show is grateful.

If you wish to donate a special prize to Palmplex 2010 Stamp Show contact palmplex2010@inspire.net.nz (special prize as subject). Acknowledgements of these special prizes will also be made in our exhibition catalogue.

Fundraising & Souvenirs

Palmplex 2010 Stamp Show is grateful for the financial assistance received from New Zealand Post, the New Zealand National Philatelic Trust, the Palmerston North City Council, the Eastern and Central Community Trust as well as support from the New Zealand Stamp Dealers Association.

As mentioned earlier, details of the remaining Palmplex 2010 Stamp Show souvenirs follow. It is not too late to take out a club 150 supporting membership as 49 numbered overprinted 50c Narnia miniature sheets remain.



150 club supporting membership miniature sheets will only be distributed mint. These differ from the remaining 558 overprinted 50c Narnia miniature sheets in that the 150 club supporting membership miniature sheets were overprinted and numbered in navy blue ink whereas the ordinary miniature sheets were overprinted in silver ink only. 558 mint silver overprinted Narnia miniature sheets, 4 cancelled and 21 FDCs remain available.

Two of the ordinary 50c Narnia miniature sheets involved in the setting up process bore two silver overprints about 1 cm apart. These will be retained and offered for sale at the Palmplex 2010 Stamp Show awards dinner later this year.



Illustrated above is an example of one of only 150 of the 150 club \$1.00 Narnia miniature sheets; overprinted and numbered in gold ink of which 79 remain available.

Please note that the special \$1.00 Narnia overprinted miniature sheet can only be purchased by the supporting member who has been or will be sent the corresponding 50c miniature sheet. We already have a number of fully paid up supporting members who have not yet purchased this item, it is listed separately on the order form and this can still be ordered, by them.

Our first transport theme customised advertising stamps (or CALs) featured a steam train.



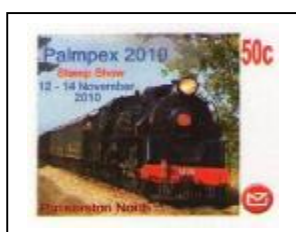
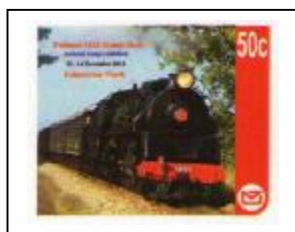
Conventionally gummed stamp



self adhesive stamp

This proved to be very popular with collectors and dealers alike. 6 conventionally gummed and 5 self adhesive steam train [+]'s mint; only one of each used [+]' and 14 pairs of FDCs remain.

As mentioned in a previous newsletter we were able to obtain some imperforate laser proofs from New Zealand Post.



2 different imperforate laser proofs featuring Ja 1271 steam train

Unfortunately this souvenir type is no longer available from New Zealand Post. Only 12 [2 different] imperforate laser proofs remain available as a unit; comprising one of each of the proofs and one of each format of the perforate stamps.

Our second transport theme customised advertising stamps featured speedway stock cars.



The Tank stamp

One depicted *The Tank* stockcar of which 2 [+]'s used, 129 illustrated FDCs and 26 Robertson Motors postcard FDCs remain.

The other featured a line up of stock cars. These were mostly used in and on our lucky dip envelopes.



Palmex lucky dip stamp type A



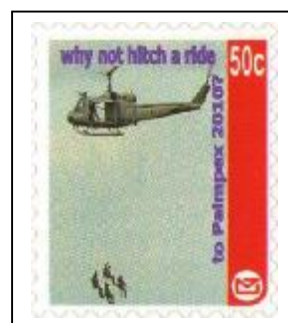
Palmex lucky dip stamp type B

Each lucky dip envelope essentially is a first day cover with various philatelic etc prizes inside. Two different FDCs were produced: one had type A stamps cancelled by a 20 March cds with type B mint stamps (+ other items) inside. The others had type B stamps cancelled and type A mint stamps (etc) inside.

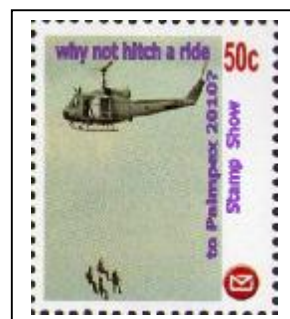
Only 268 lucky dip FDCs remain and the main travel prize has yet to be claimed!

Our latest transport themed customised advertising stamp features an RNZAF Iroquois helicopter. We are grateful to the New Zealand Defence Force for permission to use an image from a recent display of air force and army personnel at Ohakea air base near Palmerston North.

As with the previous issue two different types of our helicopter stamps are available.



20 sheets of 50 self adhesive stamps, each with a red side stripe were produced (1000 stamps). 100 self adhesive helicopter stamp FDCs were produced.



RNZAF helicopter delivering troops

40 sheets of 50 conventionally gummed stamps, each with a white side stripe were produced.

All 40 sheets were overprinted with **Stamp Show** in the side stripe as follows: half (20 sheets) had the overprint applied to the left half of each sheet; and the other half

had the overprint applied to the right half of each sheet. 1000 ordinary and 1000 overprinted conventionally gummed stamps resulted.

100 ordinary and 100 overprinted helicopter stamp FDCs were produced.

type a)



2 different se-tenant pairs (type a: overprinted + ordinary and type b: ordinary + overprinted), exist, but no FDCs were produced.

type b)



Given other time sensitive matters in this newsletter, advance notification of a planned Palmpex 2010 Stamp Show event in September follows (no illustrations are possible for obvious reasons):

At the time of production of this newsletter arrangements were being made with RNZAF Ohakea air base for an RNZAF Iroquois helicopter to fly Palmpex 2010 Stamp Show souvenir covers bearing our helicopter stamps on one of their regular/training flights. Details of the flight and dates had not been confirmed.

July 2010 marks 70 years since the start of the famous Battle of Britain which was fought in the skies over England. A more significant date is 15 September 1940 which was decisive for the RAF. 128 New Zealanders fought in the Battle of Britain including Air Vice Marshal Sir Keith Park.

A total of 128 souvenir covers, each with a self adhesive helicopter stamp will be carried on a special helicopter flight in September. Half will bear a self adhesive helicopter stamp and the other half an overprinted conventionally gummed stamp. Appropriate explanatory cachet(s) will be applied.

It is hoped that arrangements can be made for the pilot(s) to sign each cover. All will contain a souvenir insert listing

the names and achievements of the New Zealanders who participated in the Battle of Britain.

NB our helicopter flown covers will not be available for despatch until September, and will be mailed separately from any other souvenirs ordered.

Palmpex 2010 Stamp Show helicopter stamps are available – subject unsold - as mint, used or on FDCs. Please see order form for details.

Our July newsletters will be mailed out to supporting members before others, and as such our supporting members have an earlier opportunity to order these items.

Finally please consider giving a donation to Palmpex 2010 Stamp Show. The Manawatu Philatelic Society is a registered charity and New Zealand's Inland Revenue Department has approved that donations of \$5.00 or more to Palmpex 2010 Stamp Show can be claimed for a tax credit.

All souvenirs are available on a first come first served basis. Cheques, Visa & MasterCard credit cards are acceptable payment methods. Souvenirs no longer available will either not be charged to your credit card, or alternatively a refund will be made.

Thanks to *Palmerston North Stamp Centre* for their assistance with processing credit card payments. Finally please be patient and allow 28 days for order to be processed as they need to be handled by at least 3 volunteer workers.

David Smitham
Palmpex 2010 Stamp Show chairman